

CATALOG 2024



**NO WALLS  
ONLY HORIZONS**

PRODUCT CATALOG

**TORVA**



## MAKING THE OUTDOORS HOME

At TORVA, we believe in providing a comfortable, warm, and nature-embracing experience in outdoor mobile living spaces. Our core philosophy is to be the comprehensive solution expert for RV water systems, ensuring that every journey with TORVA is filled with high-quality living enjoyment.





# WE REDEFINE OUTDOOR COMFORT

## RV & VAN WATER SYSTEM SOLUTIONS PROVIDER

TORVA's water system solutions are designed to meet the RV industry's specific needs, focusing on durability, customization, and ease of maintenance. Our high-quality faucets, sinks, and water tanks ensure reliable performance in various climates, catering to outdoor life enthusiasts, van conversion professionals, and RV manufacturers. With customizable options, TORVA enhances user satisfaction and integrates seamlessly with different RV models. Our solutions address key pain points like water safety, space optimization, and user convenience, transforming the RV experience into a more comfortable and worry-free adventure. TORVA's designs provide functional excellence and add aesthetic value to RV interiors, making water usage efficient and enjoyable.







# RV SERIES

Embrace adventure with the TORVA RV Series Kitchen Sink. Designed for the open road, blending seamlessly into your RV kitchen. Its integrated ledge simplifies meal prep, while soundproofing and a spot-resistant finish ensure peace and cleanliness. Compact, efficient, and ready for any journey. TORVA turns your RV into a home, anywhere you go.







# See What These Influencers Say About Our Products



## Review from Tiny Campers

"You can see the finish, it's really nice. The faucet is going to sit in down there and you're going to be able to open and close. How cool is that! And I have this really nice cutting board to go on top of it." - Pascal, Tiny Campers

## Review from Van Kookz

"It's a really cool sink, I've never seen anything like this. It came out amazing, and looks so much better than others. It's a pretty big deep sink compared to our other one, definitely so much better." - Van Kookz





## RV1315R9NH

Upgrade your RV kitchen with the sleek, durable TORVA sink with built-in foldable faucet, featuring a versatile workstation with integrated ledge, full-coverage cutting board, and space-maximizing single bowl design. Includes a complete set for immediate setup.

- Material: T-201 Stainless Steel
- Sink Gauge: 16 Gauge
- Finish: Nano-PVD Gunmetal
- Installation Type: Under-mount / Top-mount
- Minimum Cabinet Size: 16 Inches
- Item Weight: 19.84 Pounds
- Item Dimension: 13 x 15 x 9 Inches  
(Exterior Length x Exterior Width x Basin Depth).



## RV1518R9NH

- Material: T-201 Stainless Steel
- Sink Gauge: 16 Gauge
- Finish: Nano-PVD Gunmetal
- Installation Type: Under-mount / Top-mount
- Minimum Cabinet Size: 18 Inches
- Item Weight: 23.15 Pounds
- Item Dimension: 15 x 18 x 9 Inches  
(Exterior Length x Exterior Width x Basin Depth)



## RV1617R9NH

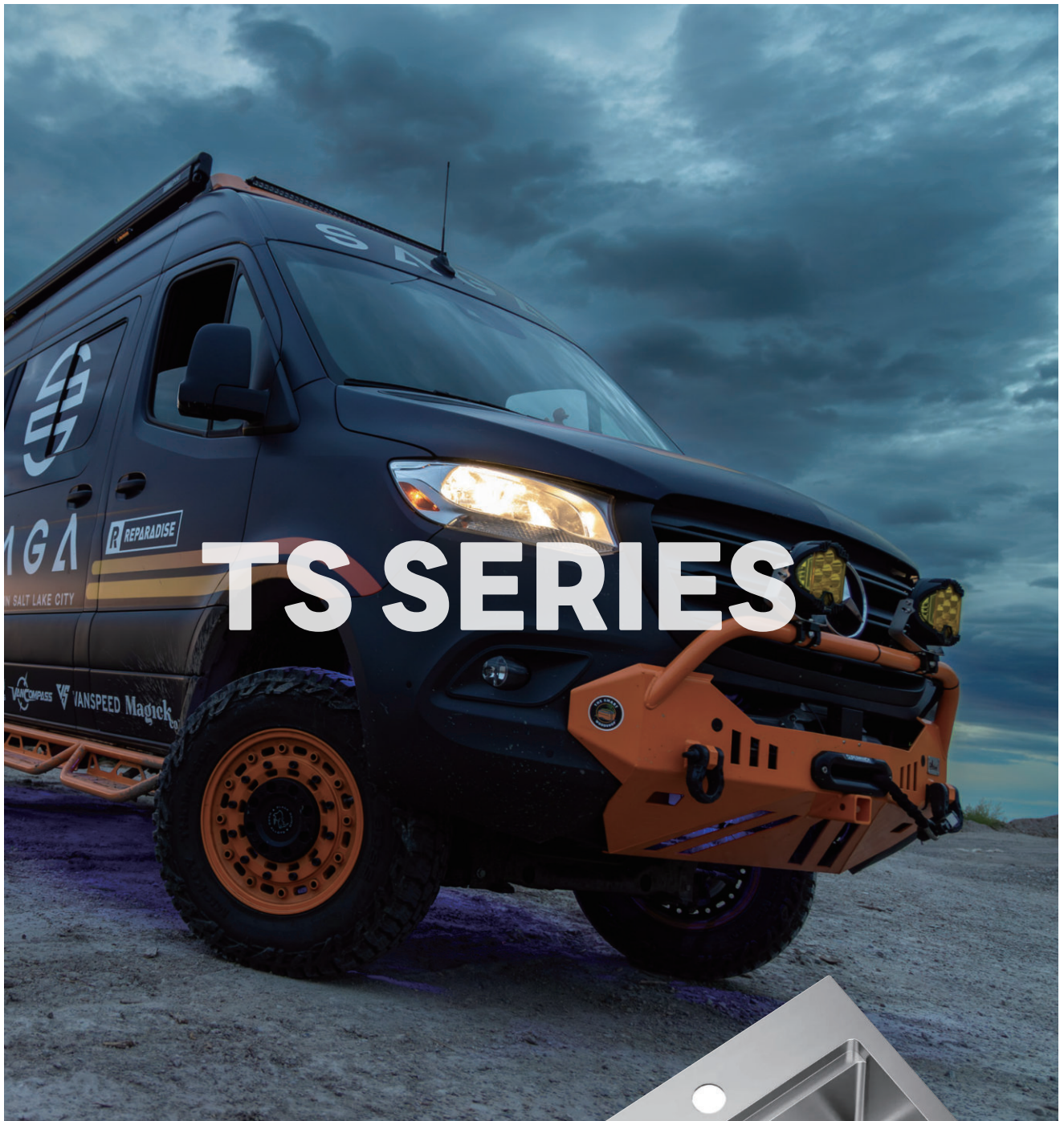
- Material: T-201 Stainless Steel
- Sink Gauge: 16 Gauge
- Finish: Nano-PVD Gunmetal
- Installation Type: Under-mount / Top-mount
- Minimum Cabinet Size: 19 Inches
- Item Weight: 25.15 Pounds
- Item Dimension: 16 x 17 x 9 Inches  
(Exterior Length x Exterior Width x Basin Depth)



## RV1621R9NH

- Material: T-201 Stainless Steel
- Sink Gauge: 16 Gauge
- Finish: Nano-PVD Gunmetal
- Installation Type: Under-mount / Top-mount
- Minimum Cabinet Size: 19 Inches
- Item Weight: 25.35 Pounds
- Item Dimension: 16 x 21 x 9 Inches  
(Exterior Length x Exterior Width x Basin Depth)





Experience the TORVA TS Series RV Kitchen Sink, where elegance meets utility. Designed for diverse environments like RVs and outdoor kitchens, its durable T-304 stainless steel construction and sleek top mount design enhance any space. The integrated ledge transforms it into a versatile workstation, complementing your culinary adventures with a seamless blend of style and efficiency. With soundproofing, easy-to-clean features, and a complete installation kit, the TORVA TS Series redefines kitchen convenience, making it a perfect fit for the modern explorer.



[www.torva.com](http://www.torva.com)





### TSS1515R9 / TSS1520R9 / TSS2020R9

Upgrade with the TORVA RV Kitchen Sink, merging style and utility. Crafted from durable T-304 stainless steel, it features an integrated ledge for accessory use, enhancing food prep to cleanup transition. The included cutting board extends your workspace, while its top mount design simplifies installation. Comes ready with all necessary hardware, offering a blend of elegance and efficiency for your RV kitchen.

- Material: T-304 Stainless Steel
- Sink Gauge: 16 Gauge
- Finish: Brushed
- Installation Type: Top-mount

#### Sink Dimension:

- TSS1515R9: 15 x 15 x 9 Inches (Exterior Length x Exterior Width x Basin Depth)
- TSS1520R9: 15 x 20 x 9 Inches (Exterior Length x Exterior Width x Basin Depth)
- TSS2020R9: 20 x 20 x 9 Inches (Exterior Length x Exterior Width x Basin Depth)



### TS1818R9

Upgrade with TORVA's versatile RV kitchen sink, ideal for any setup including RVs. Made from 16-gauge steel with a 9-inch deep basin and noise-reducing padding, it offers easy installation and maintenance. Comes with all you need for setup. Perfect for enhancing your RV kitchen tasks.

- Material: T-304 Stainless Steel
- Sink Gauge: 16 Gauge
- Finish: Brushed
- Installation Type: Top-mount
- Minimum Cabinet Size: 21 Inches
- Item Weight: 17.57 Pounds

#### Item Dimension

18 x 18 x 9 Inches (Exterior Length x Exterior Width x Basin Depth)



### TS1818R9NH

Enhance any kitchen with TORVA's durable RV kitchen sink, perfect for diverse settings. Made from 16-gauge steel with a PVD Gunmetal finish, it features a 9-inch deep basin, noise-reducing padding, and a spot-resistant coating for durability. Easy drop-in installation and garbage disposal compatibility make it a practical choice, coming with everything needed.

- Material: T-304 Stainless Steel
- Sink Gauge: 16 Gauge
- Finish: Nano-PVD Gunmetal
- Installation Type: Top-mount
- Minimum Cabinet Size: 21 Inches
- Item Weight: 20.28 Pounds

#### Item Dimension

18 x 18 x 9 Inches (Exterior Length x Exterior Width x Basin Depth)





Embrace the journey with the TORVA US Series RV Kitchen Sink, tailored for life on the move. Crafted from robust 16-gauge steel, it offers a quiet, spacious basin for all your kitchen tasks, simplified by its noise-reducing padding and seamless undermount fit. Designed for versatility in any setting, from RVs to tiny homes, it combines easy maintenance with sleek style.







## Review from Berkshire Van Company

"How deep and large the sink is! We have been using the same one ever since, and customers always comment on how lovely and deep it is!" - Stephanie & Dylan, owners of Berkshire Van Company.



## Review from Carolina Van Builders

"I honestly think I've used your sinks forever. I've used a few others on special request but I really like TORVA. I really like the gauge of steel y'all use and the sound-deadening stuff on the outside. The depth and size selection is great as well. Overall it's a really well-made product for the price. I accidentally bought a giant torva sink that I held onto instead of returning and am putting it in the house that we're building!" - Alex, owner of Carolina Van Builders.

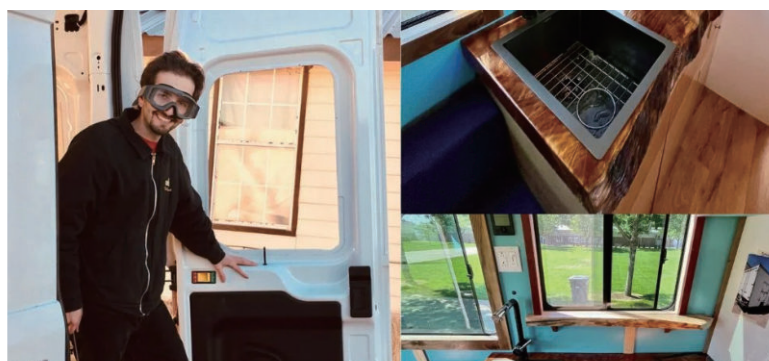
# See What These Van Builders Say About Us

## Review from Renegade Vans

"The dimensions made sense for our camper because it wasn't too big. They were compact enough but deep enough. The faucet is cool because it has a sprayer hose that's a good size, whereas other companies have a sprayer hose that is too big. I learned about it on Amazon. TORVA had the best sizes for a campervan that were not ridiculously expensive." - Aaron, Renegade Vans.

## Review from East Coast Van Builds

"We spent months researching components for our builds before we started the business. We found TORVA through other van builders whose expertise we trusted, and we've been using your products ever since. TORVA products have met all of our needs for our specific applications. While we were researching sink options, some other challenges we faced prior to finding out about TORVA were finding a manufacturer that offered a variety of deep-basin sinks that were the right balance of space and functionality across our many custom designs and finding a sink that fits our aesthetic vision. TORVA has allowed us to stay within a single product range, thus streamlining our processes, while being able to meet all our client's needs." - Dylan Bush, East Coast Van Builds.





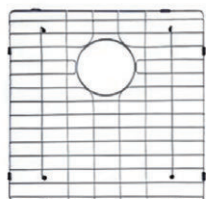


## US1315R-7

Upgrade your RV or van with our 16-gauge stainless steel sink and faucet set, designed for durability and convenience. Featuring either undermount or drop-in installation, this set includes a quiet and condensation-reducing design with an 8.5-inch deep basin suitable for various tasks. It's garbage disposal-compatible, comes with a protective grid, and is easy to maintain thanks to its X-shaped waterline and rounded corners.

### Shipped in Two Boxes:

- RV Kitchen Sink \* 1  
(include all required hardware and accessories)
- Faucet \* 1  
(include all required hardware and accessories)



### Sink Dimension:

- 13 x 15 x 8.5 Inches  
(Exterior Length x Exterior Width x Basin Depth)

### Faucet Dimension:

- 10.82 x 13.38 Inches (Faucet Height)



## US1414R9NH-7 / US1418SNH-7 / US1517R9NH-7

Upgrade your RV or tiny home with our sink and faucet combo, made from 16-gauge stainless steel for durability. Its soundproof design and undermount installation enhance aesthetics and reduce noise. The 9-inch deep, single-basin is perfect for various tasks, with an X-shaped waterline and rounded corners for easy maintenance. Compatible with garbage disposals, it comes with a protective grid and an easy-install kit.

### Shipped in Two Boxes:

- RV Kitchen Sink \* 1  
(include all required hardware and accessories)
- Faucet \* 1  
(include all required hardware and accessories)



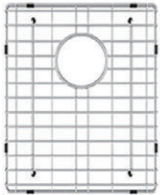
### Sink Dimension:

- US1414R9NH-7: 14 x 14 x 9 Inches  
(Exterior Length x Exterior Width x Basin Depth)  
- US1418SNH-7: 14 x 18 x 9 Inches  
(Exterior Length x Exterior Width x Basin Depth)  
- US1517R9NH-7: 15 x 17 x 9 Inches  
(Exterior Length x Exterior Width x Basin Depth)

### Faucet Dimension:

- 10.82 x 13.38 Inches (Faucet Height)





## USS1419R10

Experience the versatility of the ultimate RV kitchen sink, ideal for any space including RVs and outdoor areas. Crafted from 16-gauge stainless steel with a 10-inch depth, it includes accessories like a bamboo cutting board. Featuring sound-proofing, easy-to-clean design, and flexible installation options, this 14" x 19" sink is garbage disposal-ready and comes with all necessary hardware.

- Material: T-304 Stainless Steel
- Sink Gauge: 16 Gauge
- Finish: Brushed
- Installation Type: Under-mount / Top-mount
- Minimum Cabinet Size: 17 Inches
- Item Weight: 21 Pounds

### Item Dimension:

- 14 x 19 x 10 Inches  
(Exterior Length x Exterior Width x Basin Depth)



## USS1419R10NH

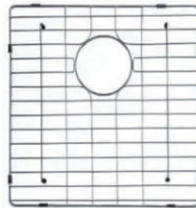
Discover TORVA's ultimate RV kitchen sink, ideal for any setting with its durable 16-gauge steel and stylish PVD Gunmetal finish. Featuring a deep single basin, bamboo cutting board, and spot-resistant nano-coating, this sink combines function with quiet operation and easy maintenance. It's ready for garbage disposal systems and comes with everything needed for installation.

- Material: T-304 Stainless Steel
- Sink Gauge: 16 Gauge
- Finish: Nano-PVD Gunmetal
- Installation Type: Under-mount / Top-mount
- Minimum Cabinet Size: 17 Inches
- Item Weight: 20.95 Pounds

### Item Dimension:

- 14 x 19 x 10 Inches  
(Exterior Length x Exterior Width x Basin Depth)





### US1315R / US1418S / US1517R9

Elevate your RV or tiny home kitchen with TORVA's durable 16-gauge steel sink, compatibility with garbage disposals. Its sound-proofing and sleek undermount design enhance quietness and aesthetics. Easy-to-clean with rounded corners and an X-shaped waterline, it's ready for installation with all necessary hardware included for confidence in your upgrade.

- Material: T-304 Stainless Steel
- Sink Gauge: 16 Gauge
- Finish: Brushed
- Installation Type: Under-mount / Top-mount

#### Sink Dimension:

- US1315R: 13 x 15 x 8.5 Inches  
(Exterior Length x Exterior Width x Basin Depth)
- US1418S: 14 x 18 x 8.5 Inches  
(Exterior Length x Exterior Width x Basin Depth)
- US1517R9: 15 x 17 x 9 Inches  
(Exterior Length x Exterior Width x Basin Depth)



### US1414R9NH / US1418SNH / US1517R9NH

Elevate your RV or van kitchen with our durable 16-gauge steel sink, featuring a sleek gunmetal PVD finish and a seamless undermount design. The 9-inch deep basin, sound-proof coating, and easy-clean features offer functionality and peace. It's garbage disposal-compatible and comes installation-ready.

- Material: T-304 Stainless Steel
- Sink Gauge: 16 Gauge
- Finish: Nano-PVD Gunmetal
- Installation Type: Under-mount / Top-mount

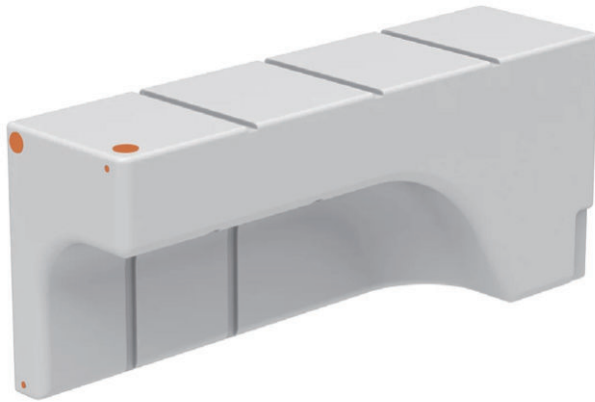
#### Sink Dimension:

- US1414R9NH: 14 x 14 x 9 Inches  
(Exterior Length x Exterior Width x Basin Depth)
- US1418SNH: 14 x 18 x 9 Inches  
(Exterior Length x Exterior Width x Basin Depth)
- US1517R9NH: 15 x 17 x 9 Inches  
(Exterior Length x Exterior Width x Basin Depth)

A photograph of a couple sitting in the open back of a white campervan. The woman is sitting in a grey folding chair, wearing a black top and light blue shorts. The man is sitting on the edge of the van, wearing a yellow beanie and a dark jacket. They are both holding food. A small table with a plate of food and a metal cup is in front of them. A black and white dog is sitting in the foreground. The interior of the van is decorated with string lights and macrame. The text "RV Water Tank & Faucet" is overlaid in the center.

# RV Water Tank & Faucet





### T-WT-33G

This 33-gallon large capacity tank is specifically designed for the Sprinter 2500 Single Tire and Ford Transit, made from high-quality LLDPE to meet food safety standards. Uniquely designed to fit over the wheel arch, it maximizes interior space efficiency. The tank comes equipped with a complete set of fittings and control valves for easy installation and operation, making it an ideal choice for travel and work.

- **Material:** LLDPE, BPA-free, meets FDA 21 CFR 177.1520 standards for food contact safety
- **Capacity:** 33 gallons / 125 liters
- **Product Dimensions:** 48" x 12.5" x 20" (LWH)
- **Net Weight:** 24.25 lbs (11 kg)
- **Compatible Models:** Sprinter 2500 Single Tire / Ford Transit

#### Fittings:

2 x 1/2" NPT fittings on both ends of the tank.  
1 x 1-1/2" NPT fitting at one end of the tank,  
2 on the other, and 1 on top



### K73DCR-4BK27432

TORVA stainless steel kitchen faucets are made from durable 16-gauge T304 stainless steel with a PEX inner hose for safe water supply. The matte black finish is rust-proof, scratch-resistant, and fingerprint-proof. The spout swivels 360° with stream and spray modes for versatile use. Easy to install, these faucets meet high durability standards.

- Weight: 1987 lbs
- Dimensions: 47.5 x 9.76 x 7.18 Inches

#### Color Options:

- Black
- All-black

Here's how our partnership can benefit you:



At **TORVA**, We value strong and long-term relationships with our business partners and are committed to mutual success.

### Product Range

Our catalog offers a comprehensive range of TORVA RV sinks, faucet, water tank, and other accessories, including various models, sizes, and finishes. You will have access to our full product lineup to cater to the diverse needs and preferences of your customers.

### Competitive Pricing

We provide competitive pricing options to support your business growth. Please contact our sales team to discuss volume-based discounts and pricing structures tailored to your purchase quantities.

### Ordering and Delivery

To streamline the ordering process, you can place orders directly with our sales team or through our website partner portal. We will work closely with you to ensure timely delivery, and shipping terms and costs will be determined on a case-by-case basis.

### Marketing Support

Unlock your business growth potential with our robust marketing support program tailored for your business, encompassing a wide range of services such as promotional materials, complimentary demo products, trade show support, collaborative new product development, and additional resources to help you thrive in the market.

### Dedicated Access to New Products

Become our dealer, you're granted the early access to our latest products and benefit from exclusive dealer discounts, ensuring you're always go beyond the evolving expectations of your clients.



Scan the QR  
Code to Get  
Dealer Price







SUPPORT@TORVA.COM

WWW.TORVA.COM

